

RC-2441 RBL

- Has four 5" openings for CANS/BOTTLES
- Crisp, clean graphics make this unit easy to identify as a Recycling Receptacle
- Available in Recycle Blue finish only



RC-2441 RBL & WR-2441 T

40-gal Recycle and Trash Containers

Both perforated steel receptacles include:

- Large, 40-gallon capacity
- Rigid plastic liner with lift holes
- Cable secures dome top to body
- Heavy duty feet on bottom keep unit slightly elevated to allow for drainage
- Features mounting holes on bottom
- UV-stable EXL-Coat™ powder coat finish

RC-2441 RBL list price: \$970.00

WR-2441 T list price: \$920.00

WR-2441 T

- Dome top with trash sized openings
- Standard colors are Black, Coffee and Hunter Green. Available in custom colors.



RC-2441/WR-2441 Specifications:

Height: 41"

Width: 24"

Weight: 62 lb

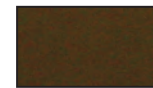
Ships via Truck



Standard Finishes for WR-2441 T (TRASH):



Black Gloss
 (#BLK)



Coffee Gloss
 (#COF)



Hunter Green
 Gloss (#HGR)

Custom colors also available.

www.ex-cell.com

Ex-Cell Kaiser LLC

11240 Melrose Avenue • Franklin Park, IL 60131-1340

Phone: 847.451.0451 • FAX: 847.451.0458

Email: service@ex-cell.com

Ex-Cell Kaiser is a
 Certified Woman Owned Business

